

06/04/2005 14:56:29 PALM BEACH COUNTY PLANNING DEPARTMENT IRVINE, CALIFORNIA

SUN VALLEY II

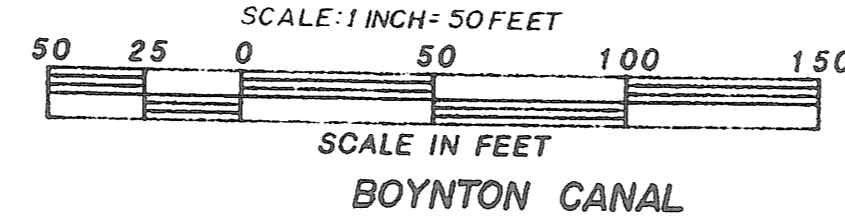
P.U.D.

IN SECTIONS 22 & 23 TWP. 45 S, RGE. 42 E. INCLUDING A REPLAT OF A PORTION OF BOYNTON GARDENS (6-32 PALM BEACH CO.)

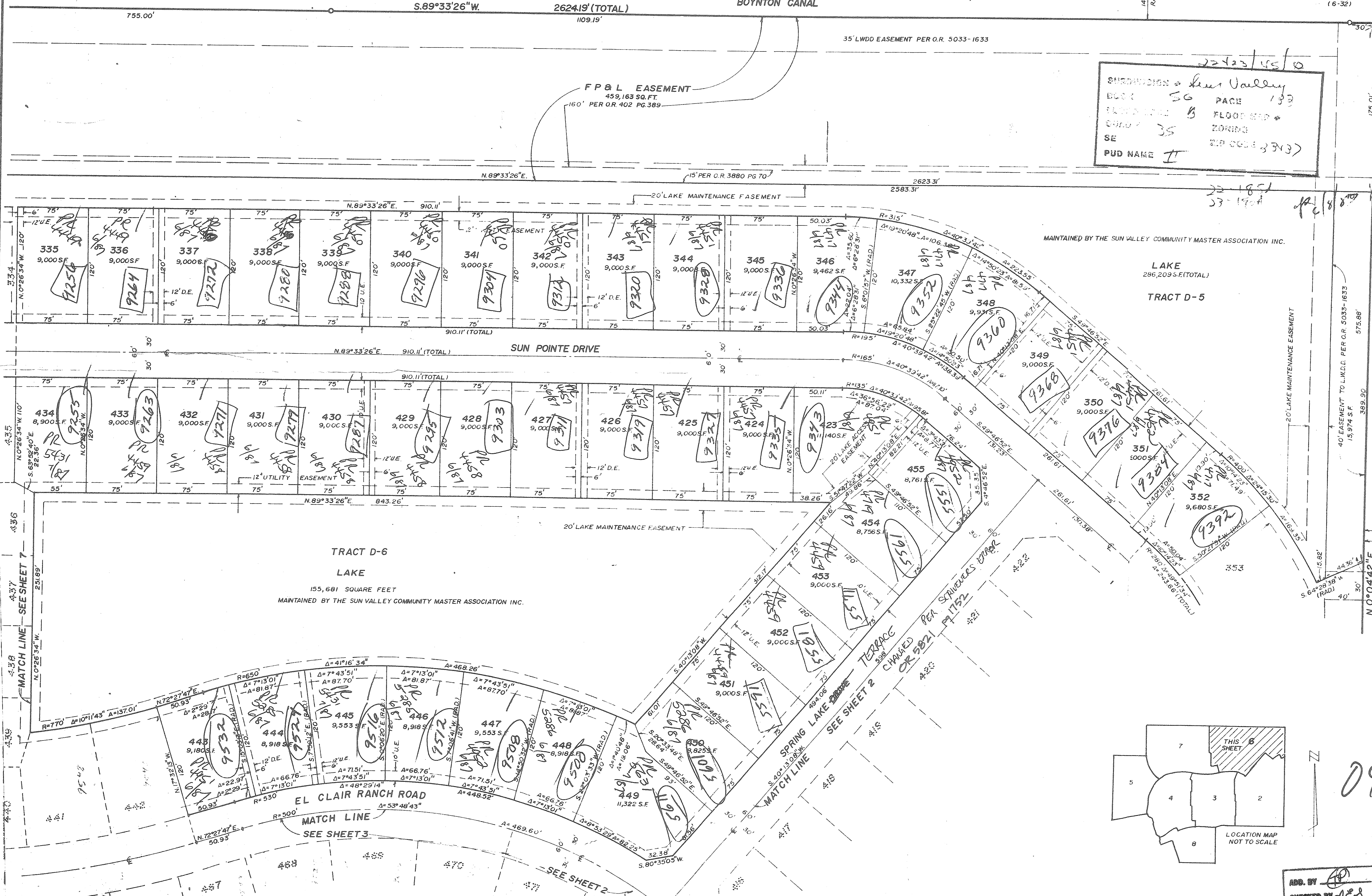
SHEET 6 OF 8

133

PALM BEACH COUNTY FLORIDA SURVEYORS - ENGINEERS WINNINGHAM & LIVELY, INC. FORT LAUDERDALE, FLORIDA

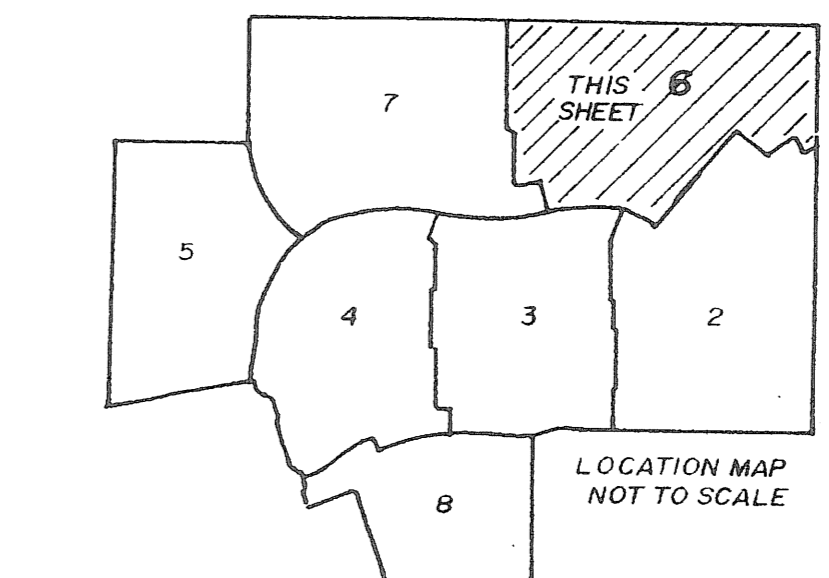


DEC. 1986.



22423/45/0
SUBDIVISION - Sun Valley
BOOK - 56 PAGE - 133
PLAT - B FLOOD ZONE
CORNER - 35 ZONING
SE - 210 000 3313
PUD NAME - II

23-185
23-194
23-195
23-196
23-197
23-198
23-199
23-200
23-201
23-202
23-203
23-204
23-205
23-206
23-207
23-208
23-209
23-210
23-211
23-212
23-213
23-214
23-215
23-216
23-217
23-218
23-219
23-220
23-221
23-222
23-223
23-224
23-225
23-226
23-227
23-228
23-229
23-230
23-231
23-232
23-233
23-234
23-235
23-236
23-237
23-238
23-239
23-240
23-241
23-242
23-243
23-244
23-245
23-246
23-247
23-248
23-249
23-250
23-251
23-252
23-253
23-254
23-255
23-256
23-257
23-258
23-259
23-260
23-261
23-262
23-263
23-264
23-265
23-266
23-267
23-268
23-269
23-270
23-271
23-272
23-273
23-274
23-275
23-276
23-277
23-278
23-279
23-280
23-281
23-282
23-283
23-284
23-285
23-286
23-287
23-288
23-289
23-290
23-291
23-292
23-293
23-294
23-295
23-296
23-297
23-298
23-299
23-300
23-301
23-302
23-303
23-304
23-305
23-306
23-307
23-308
23-309
23-310
23-311
23-312
23-313
23-314
23-315
23-316
23-317
23-318
23-319
23-320
23-321
23-322
23-323
23-324
23-325
23-326
23-327
23-328
23-329
23-330
23-331
23-332
23-333
23-334
23-335
23-336
23-337
23-338
23-339
23-340
23-341
23-342
23-343
23-344
23-345
23-346
23-347
23-348
23-349
23-350
23-351
23-352
23-353
23-354
23-355
23-356
23-357
23-358
23-359
23-360
23-361
23-362
23-363
23-364
23-365
23-366
23-367
23-368
23-369
23-370
23-371
23-372
23-373
23-374
23-375
23-376
23-377
23-378
23-379
23-380
23-381
23-382
23-383
23-384
23-385
23-386
23-387
23-388
23-389
23-390
23-391
23-392
23-393
23-394
23-395
23-396
23-397
23-398
23-399
23-400
23-401
23-402
23-403
23-404
23-405
23-406
23-407
23-408
23-409
23-410
23-411
23-412
23-413
23-414
23-415
23-416
23-417
23-418
23-419
23-420
23-421
23-422
23-423
23-424
23-425
23-426
23-427
23-428
23-429
23-430
23-431
23-432
23-433
23-434
23-435
23-436
23-437
23-438
23-439
23-440
23-441
23-442
23-443
23-444
23-445
23-446
23-447
23-448
23-449
23-450
23-451
23-452
23-453
23-454
23-455
23-456
23-457
23-458
23-459
23-460
23-461
23-462
23-463
23-464
23-465
23-466
23-467
23-468
23-469
23-470
23-471
23-472
23-473
23-474
23-475
23-476
23-477
23-478
23-479
23-480
23-481
23-482
23-483
23-484
23-485
23-486
23-487
23-488
23-489
23-490
23-491
23-492
23-493
23-494
23-495
23-496
23-497
23-498
23-499
23-500
23-501
23-502
23-503
23-504
23-505
23-506
23-507
23-508
23-509
23-510
23-511
23-512
23-513
23-514
23-515
23-516
23-517
23-518
23-519
23-520
23-521
23-522
23-523
23-524
23-525
23-526
23-527
23-528
23-529
23-530
23-531
23-532
23-533
23-534
23-535
23-536
23-537
23-538
23-539
23-540
23-541
23-542
23-543
23-544
23-545
23-546
23-547
23-548
23-549
23-550
23-551
23-552
23-553
23-554
23-555
23-556
23-557
23-558
23-559
23-560
23-561
23-562
23-563
23-564
23-565
23-566
23-567
23-568
23-569
23-570
23-571
23-572
23-573
23-574
23-575
23-576
23-577
23-578
23-579
23-580
23-581
23-582
23-583
23-584
23-585
23-586
23-587
23-588
23-589
23-590
23-591
23-592
23-593
23-594
23-595
23-596
23-597
23-598
23-599
23-600
23-601
23-602
23-603
23-604
23-605
23-606
23-607
23-608
23-609
23-610
23-611
23-612
23-613
23-614
23-615
23-616
23-617
23-618
23-619
23-620
23-621
23-622
23-623
23-624
23-625
23-626
23-627
23-628
23-629
23-630
23-631
23-632
23-633
23-634
23-635
23-636
23-637
23-638
23-639
23-640
23-641
23-642
23-643
23-644
23-645
23-646
23-647
23-648
23-649
23-650
23-651
23-652
23-653
23-654
23-655
23-656
23-657
23-658
23-659
23-660
23-661
23-662
23-663
23-664
23-665
23-666
23-667
23-668
23-669
23-670
23-671
23-672
23-673
23-674
23-675
23-676
23-677
23-678
23-679
23-680
23-681
23-682
23-683
23-684
23-685
23-686
23-687
23-688
23-689
23-690
23-691
23-692
23-693
23-694
23-695
23-696
23-697
23-698
23-699
23-700
23-701
23-702
23-703
23-704
23-705
23-706
23-707
23-708
23-709
23-710
23-711
23-712
23-713
23-714
23-715
23-716
23-717
23-718
23-719
23-720
23-721
23-722
23-723
23-724
23-725
23-726
23-727
23-728
23-729
23-730
23-731
23-732
23-733
23-734
23-735
23-736
23-737
23-738
23-739
23-740
23-741
23-742
23-743
23-744
23-745
23-746
23-747
23-748
23-749
23-750
23-751
23-752
23-753
23-754
23-755
23-756
23-757
23-758
23-759
23-760
23-761
23-762
23-763
23-764
23-765
23-766
23-767
23-768
23-769
23-770
23-771
23-772
23-773
23-774
23-775
23-776
23-777
23-778
23-779
23-780
23-781
23-782
23-783
23-784
23-785
23-786
23-787
23-788
23-789
23-790
23-791
23-792
23-793
23-794
23-795
23-796
23-797
23-798
23-799
23-800
23-801
23-802
23-803
23-804
23-805
23-806
23-807
23-808
23-809
23-810
23-811
23-812
23-813
23-814
23-815
23-816
23-817
23-818
23-819
23-820
23-821
23-822
23-823
23-824
23-825
23-826
23-827
23-828
23-829
23-830
23-831
23-832
23-833
23-834
23-835
23-836
23-837
23-838
23-839
23-840
23-841
23-842
23-843
23-844
23-845
23-846
23-847
23-848
23-849
23-850
23-851
23-852
23-853
23-854
23-855
23-856
23-857
23-858
23-859
23-860
23-861
23-862
23-863
23-864
23-865
23-866
23-867
23-868
23-869
23-870
23-871
23-872
23-873
23-874
23-875
23-876
23-877
23-878
23-879
23-880
23-881
23-882
23-883
23-884
23-885
23-886
23-887
23-888
23-889
23-890
23-891
23-892
23-893
23-894
23-895
23-896
23-897
23-898
23-899
23-900
23-901
23-902
23-903
23-904
23-905
23-906
23-907
23-908
23-909
23-910
23-911
23-912
23-913
23-914
23-915
23-916
23-917
23-918
23-919
23-920
23-921
23-922
23-923
23-924
23-925
23-926
23-927
23-928
23-929
23-930
23-931
23-932
23-933
23-934
23-935
23-936
23-937
23-938
23-939
23-940
23-941
23-942
23-943
23-944
23-945
23-946
23-947
23-948
23-949
23-950
23-951
23-952
23-953
23-954
23-955
23-956
23-957
23-958
23-959
23-960
23-961
23-962
23-963
23-964
23-965
23-966
23-967
23-968
23-969
23-970
23-971
23-972
23-973
23-974
23-975
23-976
23-977
23-978
23-979
23-980
23-981
23-982
23-983
23-984
23-985
23-986
23-987
23-988
23-989
23-990
23-991
23-992
23-993
23-994
23-995
23-996
23-997
23-998
23-999
24-000



ADD. BY [Signature]
CHECKED BY [Signature]

0498.002